



UNIVERSITY  
CENTER OF LAKE  
COUNTY  
**FSCS EL CENTRO**

Thank you for joining us!  
Enjoy a little breakfast and  
get to know your fellow  
partners!

# Welcome Partners!

Thursday, November 14, 2024



UNIVERSITY  
CENTER OF LAKE  
COUNTY  
**FSCS EL CENTRO**

Dr. Mytzy  
Rodriguez-Kufner,  
Program Director

# Welcome

Full-Service **Community** Schools  
need our **Community** Partners!



Dr. Myra Gaytan Morales,  
Executive Director and Dean  
University Center of Lake  
County

# Opening: At the Center of Community

Full-Service **Community** Schools  
need our **Community** Partners!



Dr. Mytzy  
Rodriguez-Kufner,  
Program Director

# Cadence for the Day

Full-Service **Community** Schools  
need our **Community** Partners!

# Grounding Questions



What are your goals for this FSCS grant?



What overarching questions do you have about this FSCS grant?



What impact do you hope to have on the communities you serve as the result of this FSCS grant program? On schools? On students? On families? On teachers? On administrators?



What other questions do you have about your role?



# Participating Schools Local Educational Agencies (LEA)

# Diamond Lake School District 76 in Mundelein



Diamond Lake Elementary  
West Oak Intermediate  
West Oak Middle

# North Chicago School District 187

Evelyn Alexander Elementary  
Forrestal Elementary





Margaret Boyter-Escalona, MA

Education Consultant,  
Complément Consulting Group



# The Power of Community

Full-Service **Community** Schools  
need our **Community** Partners!



# *The Power of Community*

---

*Presented by Margaret Boyter-Escalona, MA  
Education Consultant, Complément Consulting Group*

# *Icebreaker Activity / Conversation Starter*

***Turn to a partner and discuss these questions.***

***\*What is a community?***

***\*What communities do you belong to?***

***\*What makes these groups communities?***



# *Examples of Communities From Mainstream Media*

---

The community of:

- \* the local watering hole (Cheers)
- \* The workplace (The Office)
- \* The school (Abbott Elementary)





How do these examples and your discussions demonstrate the concept of COMMUNITY?



---

**\*Transform traditional public schools into neighborhood hubs that mobilize students, educators, staff, partners, families & community members to reimagine education and co-construct a shared vision for their school and their community.**

**\*Form a core element of an equity strategy. All children and families benefit from access to resources, opportunities and supports to advance learning and healthy development.**

**\*Tap into a community's assets – from nonprofits, cultural organizations and businesses - to bring enhanced learning opportunities to under-resourced schools reducing the achievement gap, the inequities in student performance on test scores, grades, attendance, and social emotional attitudes that result from lack of access.**

# Successful Community Schools

---

- Capitalize on local assets of the entire community including the gifts and talents of people who live and work there—parents, families, educators, school staff, and community partners.
- Create and maintain a rich academic focus.
- Provide sufficient time and depth on arts and culture & on social-emotional domains.
- Use quantitative and qualitative data to inform practice and inform funders.



# How Community Partners Shape this Full-Service Community Schools Grant

---



- Collaborate with park districts, cultural institutions, higher education institutes, health centers, nonprofits, & others to support enrichment for students and families.



- Welcome District Superintendents & Principals to share their expertise and knowledge of the needs of students, families, and teachers to create relevant programs meeting the funded goals and objectives..



- Evaluate the success of the grant using school & district data, administer surveys to, teachers, students, after-school instructors, & families in the reports to the U.S. Dept. of Education to support continuous improvement, & provide a feedback loop for all partners.

# Creating the Conditions for Community

---

- Adopt the African concept of *Ubuntu*: an authentic individual human being is part of a larger and more significant relational, communal, societal, environmental and spiritual world.
- *Ubuntu* encompasses the interdependence of humans on another and the acknowledgment of one's responsibility to their fellow humans and the world around them.



# *Parting Thoughts on the Power of Community You Re-imagine Schools*



---

We cannot seek achievement for ourselves and forget about progress and prosperity for our community. Our ambitions must be broad enough to include the aspirations and needs of others, for their sakes and for our own. -Cesar Chavez

Education is for improving the lives of others and for leaving your community and world better than you found it.  
-Marian Wright Edelman



UNIVERSITY  
CENTER OF LAKE  
COUNTY  
**FSCS EL CENTRO**

Dr. Ryan Hurley

Midwest Director

Institute for Educational Leadership  
Coalition for Community Schools



# Vision Casting: Community Builder Activity

Core to all Full-Service Community  
Schools (FSCS)

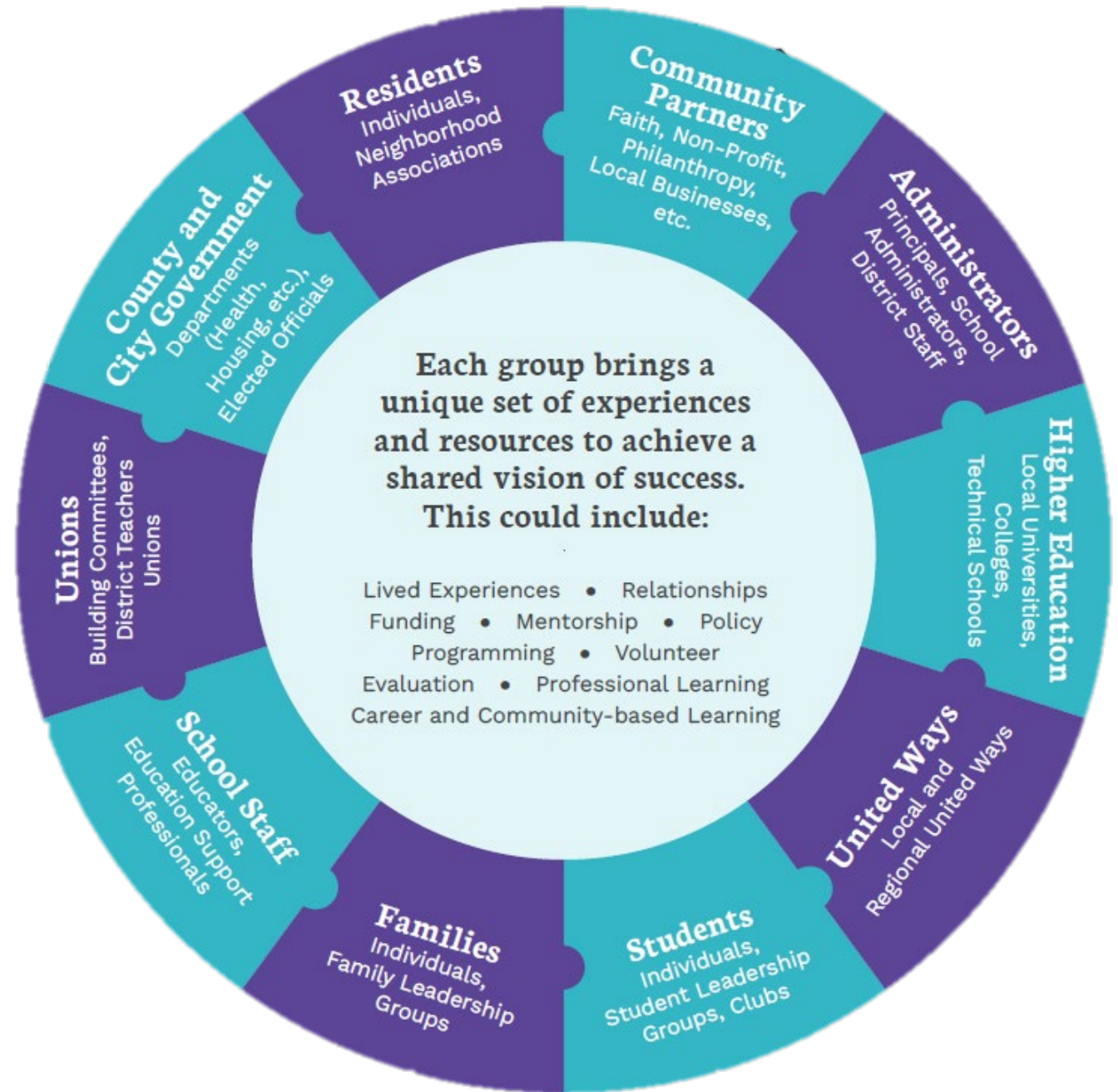


# What is a Community School?





# Community Schools are unifying strategy.





# Vision Casting

At the core of any worthwhile action is a **clear and shared vision.**



*What is your vision for children and families in your community?*



Dr. Lisa Rathje

Executive Director  
Local Learning



# The ABCs of the role of Arts in Building Belonging and Connecting to Community

*When asked to engage with a school's community, is it clear who "is" the community? This interactive session will engage cultural mapping through an arts-based lens to better understand the role of cultural identity and group belonging in our school communities.*

Full-Service **Community** Schools  
need our **Community** Partners!



UNIVERSITY  
CENTER OF LAKE  
COUNTY  
**FSCS EL CENTRO**

Dr. Mytzy  
Rodriguez-Kufner,  
Program Director

# What We've Done

2024....So Far!



UNIVERSITY  
CENTER OF LAKE  
COUNTY  
**FSCS EL CENTRO**

Dr. Mytzy  
Rodriguez-Kufner,  
Program Director

# Next Steps

2025 and Beyond!



UNIVERSITY  
CENTER OF LAKE  
COUNTY  
**FSCS EL CENTRO**

**Dr. Mytzy  
Rodriguez-Kufner,  
Program Director**

# Thank you!

**We couldn't do it without you!**

We'll be talking and meeting  
throughout this school year and  
calendar year 2025



UNIVERSITY  
CENTER OF LAKE  
COUNTY  
**FSCS EL CENTRO**

# Evaluation

Please fill out our quick  
Evaluation  
Click on the QR Code

Our deepest appreciation  
for coming to our first  
partners' event.